

Contributing to Community

Homebuilders—Giving Back To The Community With Compassion And Caring

K Hovnanian Welcomes Building Industry Charities at Summit

In mid-November, K Hovnanian Homes Mid-Atlantic Division and their Trade Partner Councils from Maryland and Virginia held their annual Trade Partner Summit. More than 100 companies and approximately 300 people gathered for a morning of robust programming. At the Summit, K. Hovnanian graciously provided the **Home Builders Care Foundation** and HomeAid Northern Virginia the opportunity to outreach to Summit attendees for contributions (financial and in-kind) benefiting the charitable construction programs of the two organizations. Thank you K Hovnanian Homes! ✨



Pictured from L to R are: Matt Pellerito, K Hovnanian Homes; HomeAid NoVa board members Jewell Mikula and John Darvish; Chip Merlin, K Hovnanian Homes and HBCF board member Jack Orrick of Linowes & Blocher, LLP.

Annual Thanksgiving Food Drive Benefits LARS

This year's annual Thanksgiving Food Drive, hosted by the Home Builders Care Foundation (HBCF), took place at MNCBIA's October dinner meeting.

Thanks to the generosity of the industry, hundreds of pounds of food were donated by MNCBIA members and collected at the event. The donations of food were then delivered to the food pantry of Laurel Advocacy and Referral Services (LARS). LARS is a non-proselytizing



HBCF's Patti Kane (L) delivers a bounty of food to Nancy Graham, LARS' Executive Director.

ecumenical ministry serving the Greater Laurel area by assisting homeless and low-income individuals or families experiencing crisis with emergency and long-term services designed to promote self-sufficiency. Each year, LARS serves approximately 1,600 persons, of which children make up nearly 40 percent. Services offered at LARS include emergency assistance such as food, shelter, eviction prevention, utility cut-off, prescription and clothing, limited transitional housing and support services, linkage with appropriate community agencies, workshops and assistance for job placement, budget counseling and more. ✨

COMMUNITY BUILDERS

A QUARTERLY PUBLICATION OF
THE MARYLAND-NATIONAL CAPITAL BUILDING INDUSTRY ASSOCIATION
& THE HOME BUILDERS CARE FOUNDATION



Fall 2009
Vol. 6, No. 4

New Permanent Housing Project Under Construction in Takoma Park

Just a few weeks ago, construction began on the latest **Home Builders Care Foundation** project. A four-unit apartment building in Takoma Park, MD, is undergoing an extensive interior transformation under the direction of Builder Captain **Sunrise Home Builders LLC** and Managing Partner **Curt Adkins**. The project is a partnership between Coalition Homes, Inc., (CHI) a subsidiary of the Montgomery County Coalition for the Homeless (MCCH), and the Montgomery County Department of Housing and Community Affairs (DHCA). Once renovation is complete, this building will provide permanent housing to formerly homeless families and children.

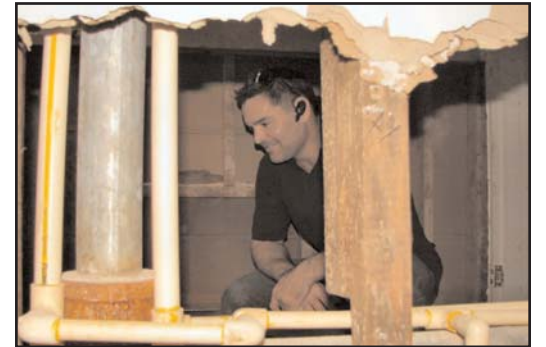


Each unit is approximately 800 sq. ft. and consists of two bedrooms, one bath, a kitchen, dining area, living room and a small patio area. The units are especially appropriate for providing much needed housing stability to small families exiting the cycle of homelessness. The new residents will also be participants in MCCH's Partnership for Permanent Housing program.

The building was purchased by CHI with project financing from DHCA via the Housing Initiative Fund, although the loan was much less than the minimum amount needed to have a private firm perform the entire scope of renovation. HBCF's involvement is making the project work within budget constraints.

"Working on a HBCF project is a truly rewarding experience," commented Adkins. *"When you see the folks and the community that benefit from a project like this, and you see how they appreciate it, it's incredibly satisfying. I'm thankful*

to our wonderful subcontractors who gave such great prices to make the project happen."



The 55-year old building was vacant due to foreclosure and has no structural problems. Scope of work items include replacing the roof, installing a new HVAC system, providing new kitchen cabinets, countertops and appliances, upgrading plumbing, electrical, and additional finishing work.

CHI, formed in 2005 as the real estate development and management subsidiary of MCCH, currently owns about 50 apartments, primarily condominiums acquired through Montgomery County's MPDU program. CHI is also redeveloping a Bethesda office building to provide residence for 32 single adults. The subsidiary works closely with MCCH to establish permanent supportive housing as an alternative to shelters and transitional housing. Residents sign a standard lease, pay 30 percent of their income as rent and receive rental assistance and supportive services to maximize their opportunity for housing stability.

Sharan London, MCCH Executive Director commented *"We are incredibly grateful that the Foundation has joined us as a key partner in creating permanent housing in our community. Because of this support, great strides will be made in our efforts to end homelessness in Montgomery County."*

A certificate of occupancy is expected by early 2010. ✨



Creating Homes

Homebuilders—Responsive, Responsible And Respected

**Bank of America
Donates to
HomeAid
Washington DC**



Bank of America has been a dedicated and committed champion of HomeAid America for the past five years. As one of the world's largest financial institutions, Bank of America has donated time, resources, and funds to HomeAid's national office that has helped pave the way for new education and expansion initiatives, as well as helped directly support HomeAid's local chapter operations.

With key support from Bank of America, HomeAid was able to expand its brand into five new communities, including the District of Columbia, where **HomeAid Washington, DC**, operates as an affiliate program of the **Home Builders Care Foundation**. For 2009-10, Bank of America again demonstrated its ongoing commitment to

HomeAid not only by contributing \$100,000 to the national office, but also by giving \$5,000 to each of HomeAid's 22 chapters, including HomeAid Washington, DC.

"Bank of America has a dedicated focus on the needs of our communities and has made a 'Community Impact' commitment to provide financial resources and expertise to help communities achieve their full potential as desirable places for people to live, work and raise families," commented John DeZinno, Senior Vice President, Bank of America. "Because of HomeAid's community-strengthening programs to help end homelessness, Bank of America is proud to leverage its resources to further develop housing for the organization and its chapters."

HomeAid Washington, DC, is extremely grateful to Bank of America for its direct support of our efforts to build and maintain dignified housing for the homeless. The chapter aims to utilize the funds to leverage its ability to undertake permanent supportive housing projects in the District. ✨

TD Bank Leads Workshop for Residents at Home Builders Care Assessment Center

This past September, representatives from **TD Bank**, an MNCBIA member financial institution, conducted a financial education workshop for Spanish-speaking clients of the Montgomery County Coalition for the Homeless (MCCH). The workshop was held in the new Home Builders Care Assessment Center (HBCAC) (formerly the Men's Emergency Shelter), completed by the Home Builders Care Foundation earlier this year. The bank operates a branch store on Gude Drive in Rockville, just down the street from the newly expanded HBCAC. ✨

2009 MNCBIA Executive Committee

<i>President</i> , Thomas M. Farasy	<i>VP/Calvert Co.</i> , Jim Kettler
<i>Treasurer</i> , Steve Nardella	<i>VP/Charles Co.</i> , Doug Meeker
<i>Secretary</i> , Chas Stuart Jr.	<i>VP/Montgomery Co.</i> , Frank Bossong, IV
<i>Imm. Past President</i> , Richard A. Sullivan Jr.	<i>VP/Prince George's Co.</i> , Marty Mitchell
<i>Life Director</i> , William Shipp	<i>VP/St. Mary's Co.</i> , Guy Curley
<i>Associate VP</i> , Robert Jacobs	<i>VP/Washington DC</i> , Brian "A.J." Jackson
<i>Legal Counsel</i> , Stephen P. Elmendorf	<i>Executive VP</i> , Diane K. Swenson, CAE

2009 MNCBIA Board of Directors

Bill Bilo	Howard Katz	Andy Rosenthal
Hillary Colt Cahan	Gary Kret	Ray Sobrino
Mike Conley	David Lunden	Stephen Spano
Tony Crane	Stephen Paul	Clark Wagner
Timothy Dugan	Nanci Porten	Peggy White
Andrea Leahy-Fuecheck	Steve Proctor	Bryan Whittington
Robert Harris	Marc Rose	Carter Willson

2009 HBCF Board of Directors

<i>President</i> , Ted Smart	Miles Haber
<i>Vice President</i> , Chas Stuart, Jr.	Cecilia Hodges
<i>Secretary</i> , Jack Orrick	Jim Kettler
<i>Treasurer</i> , Mike Goldstein	John Lavery
Curt Adkins	Richard MacDonough
Tom Bourke	Pete McKenna
Liza Bowles	Peggy Molloy
Hugh Carroll	Pete Robertson
Mary Fertig	R. Mark Taylor

Community Builders Editorial Staff

Kelly H. Grudziecki, *MNCBIA Communications Manager*
Patti Kane, *HBCF Program Manager*



Building Neighborhoods

Homebuilders—Creating Neighborhoods With Purpose and Vision



Newland Hosts 4th Annual Pumpkin Festival

On Saturday, October 10, **Newland Communities** hosted its fourth annual *Life is good® Pumpkin Festival* at Clarksburg Town Center—one of three festivals hosted by Newland across the country. Free to attend, the pumpkin festival gave families a fun-filled day of pumpkin carving, scarecrow stuffing, face painting, live music, great food plus an awesome sunset lighting of hundreds of carved pumpkins on a wall of scaffolding. At this year's festival, funds were raised for two charities **HomeAid Washington, DC**, and Project Joy.

Sponsors of the festival included MNCBIA members

Linowes & Blocher LLP, Gutschick, Little & Weber PA, Charles P. Johnson & Associates and Ruppert Nurseries.

Special thanks to Newland's **Peggy Molloy** for spearheading the event along with representatives from the Clarksburg Historical Society, the CTC Homeowners

Association and Farmer's Market, the Clarksburg Chamber of Commerce, the Clarksburg Sports Association and local area school PTA leaders who served on the festival planning committee. Thanks also to teams from **Miller & Smith, 1st Mariner Bank** and MNCBIA for helping cut and gut 1,000 pumpkins! ✨

